

REVISIONS			
REV.	DESCRIPTION	DATE	APPROVED
A	Antifouling option w/wo engine added	20.05.2022	VVu

ANTIFOULING PAINT APPLICATION GUIDE:

Step by step application:

Seajet 117 Multipurpose Epoxy Primer - 2 coats
 Seajet 034 Emperor antifouling paint - 2 or 3 coats

Surface preparation:

- Remove release agent residues with acetone
- Mask the edge of the waterline with good quality masking tape
- Matt the bottom surface with sandpaper grit P80 - P100
- Dust and degrease the surface again with SeaJet Thinner E (use nitrile / latex gloves), wash immediately before painting, avoid leaving hand marks on the fuselage

Tips:

You can see if dust is present by wiping the surface with a clean white cloth

Preparation of the paint:

The coating should be applied immediately after surface preparation. By following this principle, it is ensured that the surface is not re-contaminated.

- The paints should be at the same temperature as the surroundings and the hull,
- Foundation - carefully mix the base in a can, then combine the ingredients in the right proportions and mix thoroughly,
- Antifouling paint - mix thoroughly in the can, then mix the white and black paint in the proportions 2:1

Tips:

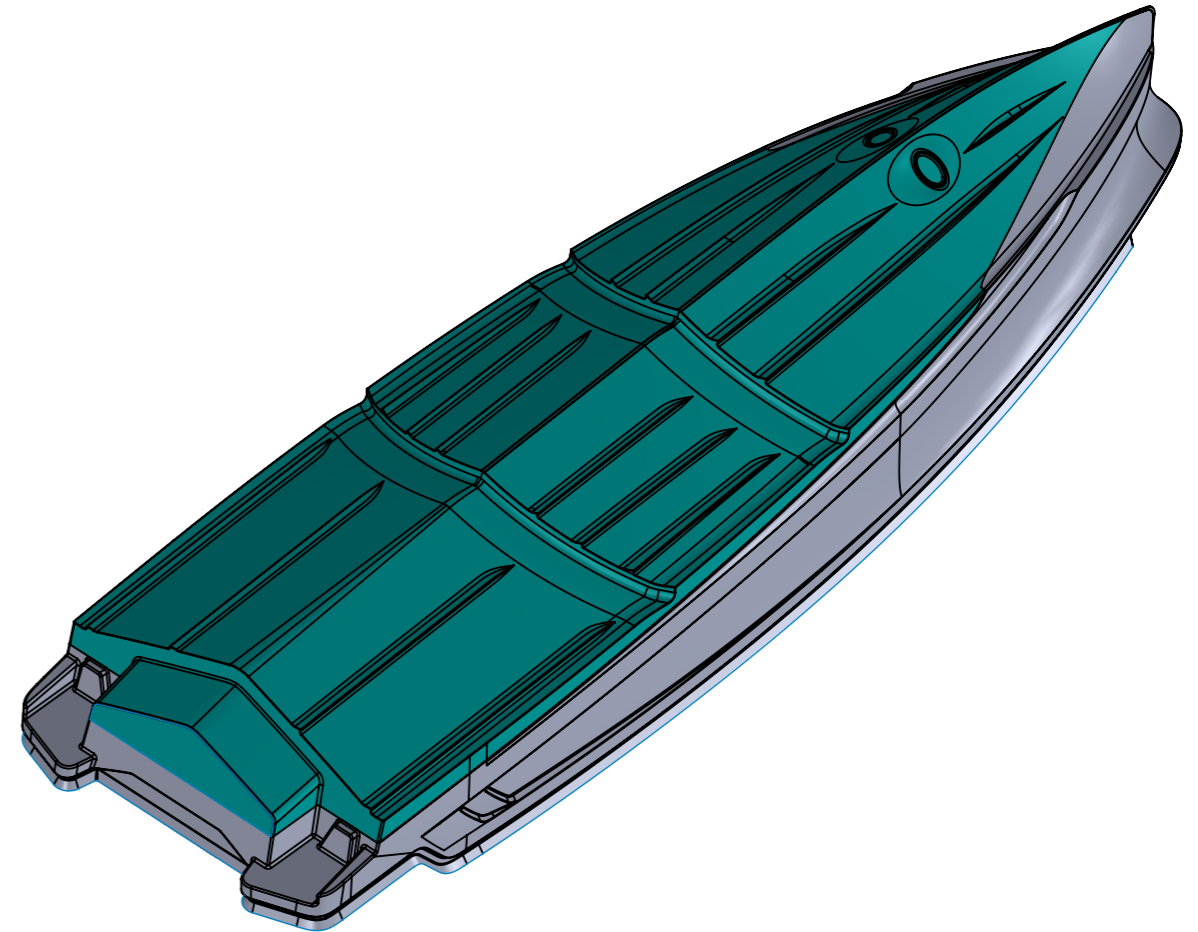
We recommend that you note the "batch number" of the paint applied to a specific boat in case of any complaints.

Application site

The paints should be applied in a place free of dust, well ventilated, at a temperature of about 18-20 degrees C. During application, precautions should be taken in accordance with the MSDS

Tools and method of application:

- Apply paints with a roller, e.g. velor fleece 4-6 mm
- Cover the roller with tape before painting and then remove it to remove loose hair and increase the fur volume
- Use paint trays when applying paint
- Apply Seajet 117 Epoxy Primer in layers with a thickness of approx. 170 microns wet (use measuring comb) in two coats. Another layer after the "thumb test" after about 1 hour. The primer should evenly and completely cover the gelcoat. There should be no gel coat gaps through the primer. Theoretical spreading rate is 10 m2 with a wet film thickness of 85 microns.
- Apply the 034 Emperor antifouling paint after 1-2 hours. (thumb test) and after a maximum of 24 hours. after applying the epoxy primer to a total thickness of 180 microns wet (use a measuring comb) in two or three coats. Another layer after about 1 hour. The paint should evenly and completely cover the undercoat. There should be no clearances of the gray primer through the paint. Theoretical coverage of 12m2 with a wet film thickness of 90 microns.



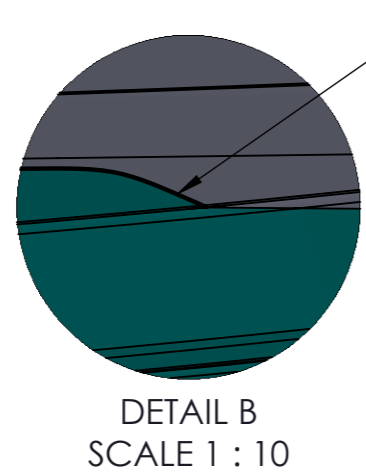
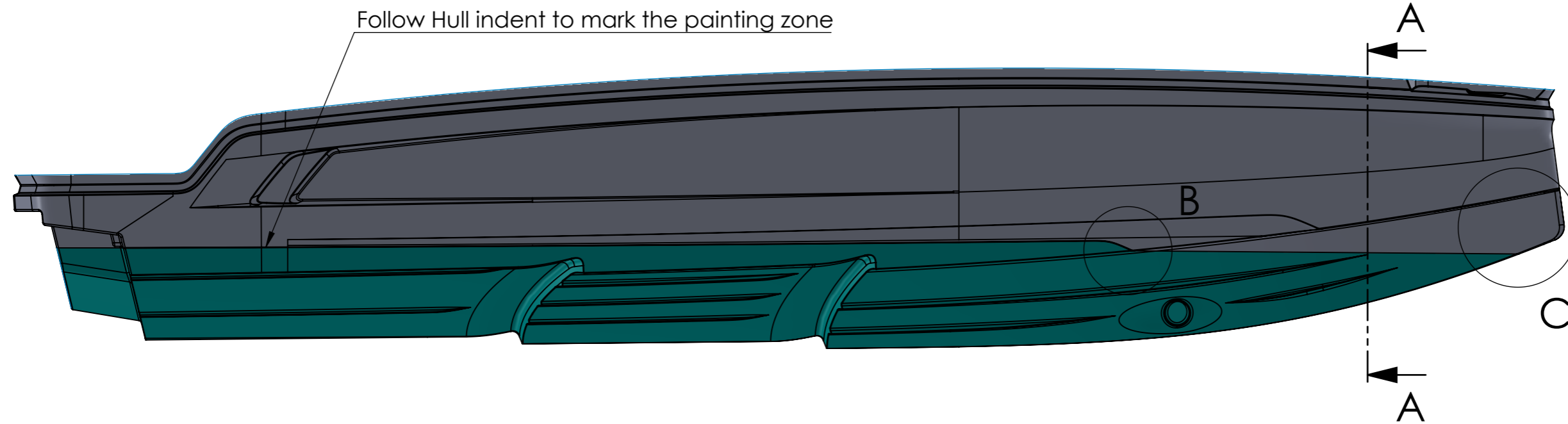
PART NO.	ITEM	DESCRIPTION	SUPPLIER	MODEL	SIZE, CAPACITY	QTY.
1	AXO000040, A	EPOXY PRIMER	SEAJET	117 MULTIPURPOSE EPOXY PRIMER	2.5L	2
3	AXO0000297, A	ANTIFOULING	CMP CHUGOKU	SEAJET 034 EMPEROR A, WHITE	1L	7
2	AXO0000296, A	ANTIFOULING	CMP CHUGOKU	SEAJET 034 EMPEROR A, BLACK	1L	7

This document and the information contained in it is proprietary and confidential information of Axopar Boats Oy. Neither this document nor any of the information contained herein may be reproduced, disclosed to others, or used for any purpose other than for the purpose it has been provided without the prior written permission of Axopar Boats Oy.

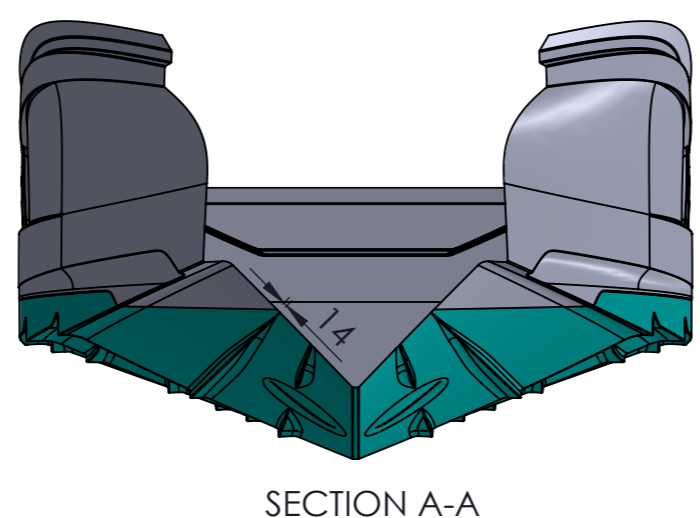
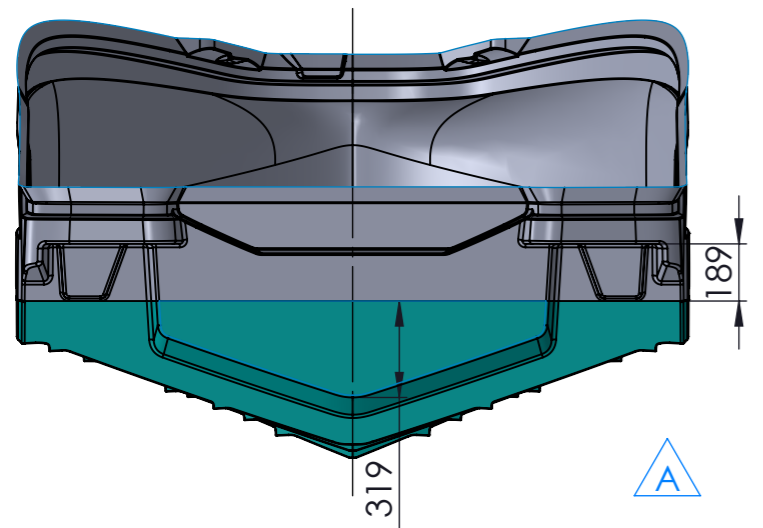
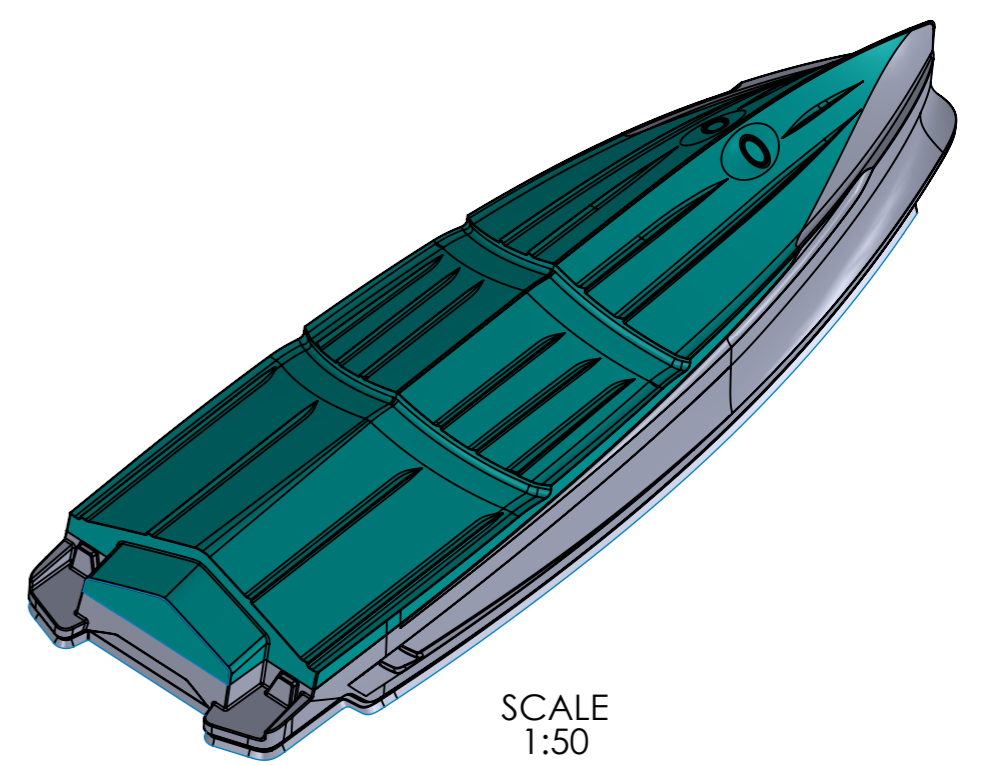
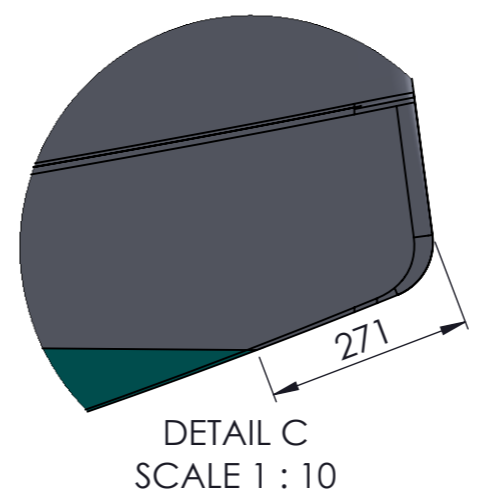
AXOPAR		ITEM	AXO9000347	REV	A
BOAT MODEL AX25		MODEL YEAR	2022	DRAWING	REV A
CREATED	BY PULSE2	DATE	14.03.2022	DESCRIPTION	ANTIFOULING, GREY
CHECKED	L.C.	DATE	14.03.2022	TECHNICAL DESCRIPTION	
ACCEPTED	VVu	DATE	29.03.2022	Manufacturing specification	
				SCALE	PAGE
				1:40	1 / 3



REVISIONS			
REV.	DESCRIPTION	DATE	APPROVED
A	Antifouling option w/wo engine added	20.05.2022	VVu



Continue straight after the radius of the Hull indent shape to the dimensioned position on the Bow



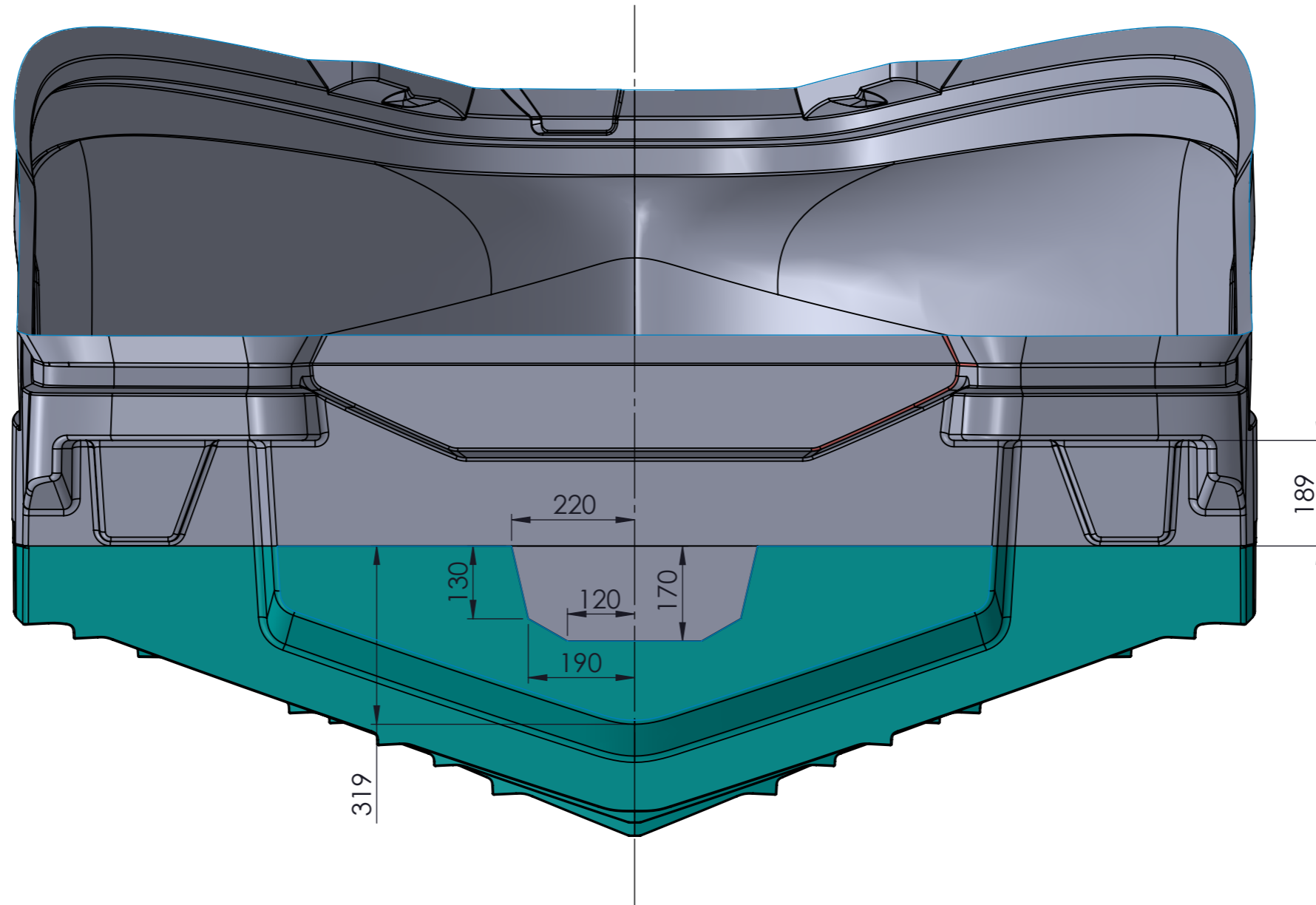
Only applied when engine option is not selected

This document and the information contained in it is proprietary and confidential information of Axopar Boats Oy. Neither this document nor any of the information contained herein may be reproduced, disclosed to others, or used for any purpose other than for the purpose it has been provided without the prior written permission of Axopar Boats Oy.

AXOPAR		ITEM	AXO9000347	REV	A
BOAT MODEL	AX25	MODEL YEAR	2022	DRAWING	DRW00485
CREATED	PULSE2	DATE	14.03.2022	DESCRIPTION	ANTIFOULING, GREY
CHECKED	L.C.	DATE	14.03.2022	TECHNICAL DESCRIPTION	
ACCEPTED	VVu	DATE	29.03.2022	Manufacturing specification	
				SCALE	1:25
				PAGE	2 / 3



REVISIONS			
REV.	DESCRIPTION	DATE	APPROVED
A	Antifouling option w/wo engine added	20.05.2022	VVu



Only applied when engine option is selected 

This document and the information contained in it is proprietary and confidential information of Axopar Boats Oy. Neither this document nor any of the information contained herein may be reproduced, disclosed to others, or used for any purpose other than for the purpose it has been provided without the prior written permission of Axopar Boats Oy.

AXOPAR		ITEM	AXO9000347	REV	A
BOAT MODEL	AX25	MODEL YEAR	2022	DRAWING	DRW00485
BY	PULSE2	DATE	14.03.2022	DESCRIPTION	ANTIFOULING, GREY
CHECKED	L.C.	DATE	14.03.2022	TECHNICAL DESCRIPTION	
ACCEPTED	VVu	DATE	29.03.2022	Manufacturing specification	
				SCALE	1:10
				PAGE	3 / 3

